



Exam : 642-586

Title : Advanced Wireless LAN for System Engineers

Ver : 02.07.07

QUESTION 1:

Certkiller .com is adding a new branch office with 60 access points and 120 users that requires WDS to support a wireless VoIP application on a single subnet. Additionally, the customer requires local authentication services to provide authentication capability in the event of a WAN failure. Which product will support the customer requirements?

- A. Cisco 2811 Integrated Services Router
- B. Cisco 3745 Multiservice Access Router
- C. Cisco 3845 Integrated Services Router
- D. Cisco 2851 Integrated Services Router

Answer: C

QUESTION 2:

The Cisco wireless LAN controller supports multiple secure authentication types. Which authentication type provides Layer 3 security?

- A. WPA2
- B. Cranite
- C. AirFortress
- D. IPSec

Answer: D

QUESTION 3:

The Cisco WCS logs which two security events? (Choose two.)

- A. security misconfigurations on the controller
- B. CKIP/MIC failures
- C. rogue access points
- D. wireless protocol analyzer detection
- E. rogue clients

Answer: C,E

QUESTION 4:

Which EAP authentication is used by the Cisco Wireless LAN controller for local authentication?

- A. EAP-MD5
- B. No EAP authentication is used.

- C. EAP-TLS
- D. PEAP-MSCHAP
- E. PEAP-GTC

Answer: B

QUESTION 5:

Which method is used to determine the best path across a wireless mesh network?

- A. AWP
- B. hop count
- C. STP
- D. EIGRP

Answer: A

QUESTION 6:

OFDM provides which improvement over DSSS in the 2.4-GHz range?

- A. greater resistance to multipath interference
- B. more bandwidth per channel
- C. more nonoverlapping channels
- D. full duplex communication

Answer: A

QUESTION 7:

You work as a network technician at Certkiller .com. Your boss, Mrs. Certkiller, is curious about the Cisco Compatible Extensions program. You tell her that it is divided into three phases.

Match the phases with the appropriate definitions.

Use each phase once and only once.

Phases, select from these

Phase 1

Phase 2

Phase 3

Definitions

Design: Cisco provides support to design team to ensure proper design of product.

Specification: Cisco provides specification to WLAN silicon providers.

Compatibility: Approved products are marketed

Licensing: One-time licensing fee is collected.

Interoperability Test: Devices are tested by approved third-party vendor against the specification

Phases, place here

Place here

Place here

Place here

Place here

Place here

Answer:

Definitions

Design: Cisco provides support to design team to ensure proper design of product.

Specification: Cisco provides specification to WLAN silicon providers.

Compatibility: Approved products are marketed

Licensing: One-time licensing fee is collected.

Interoperability Test: Devices are tested by approved third-party vendor against the specification

Phases, place here

Place here

Phase 1

Phase 3

Place here

Phase 2

QUESTION 8:

Which two activities are included in a Wireless Security Posture Assessment? (Choose two.)

- A. scan all host systems and log all open ports
- B. check access point configurations and compare them against recommended security practices
- C. ensure that the client is using a strong password policy
- D. check all systems to ensure that the patches are being applied in a timely manner
- E. find WLAN traffic that is leaking from the customer building

Answer: B,E

QUESTION 9:

Which three authentication methods are supported on the WLSE Express local authentication server? (Choose three.)

- A. EAP-TTLS
- B. EAP-Cisco Wireless (LEAP)
- C. EAP-SIM
- D. EAP-FAST
- E. EAP-MD5
- F. EAP-PEAP

Answer: B,D,F

QUESTION 10:

You work as a network technician at Certkiller .com. Your boss, Mrs. Certkiller, is curious about the advanced feature set products. You are required to detect and move the correct three.

Select from these	Advanced Feaure Set products
Wireless Services Module	Place here
Cisco Wireless Control System	Place here
Wireless Domain Services	Place here
Cisco Aironet 1130AG Series access point	
CiscoWorks Wireless LAN Solution Engine	
CiscoWorks Wireless LAN Solution Engine	

Answer:

Advanced Feature Set products

Wireless Services Module

Cisco Wireless Control System

CiscoWorks Wireless LAN Solution
Engine

Explanation:

The "CiscoWorks Wireless LAN Solution Engine" is the management of the Core Feature set products.

This is the description for the class - "Cisco Wireless LAN Advanced Topics (CWLAT)v1.0":

This course is designed to give students a firm understanding of the components, features and proper deployment of the Cisco Unified Wireless Network. The course focuses on advanced WLAN design, integrating Cisco wireless components into a wired infrastructure. Deployment topics include managing the WLAN by using the Cisco Wireless Control System (WCS) to manage the advanced feature set and using the CiscoWorks Wireless LAN Solutions Engine (WLSE) to manage the core feature set.

QUESTION 11:

Certkiller .com wants to use the 4.9-GHz band to provide connectivity for public service vehicles. The customer also wishes to have 802.11 wireless connectivity from PDAs to the vehicles. Which configuration option would provide the desired support?

- A. 4.9-GHz interface in bridge mode, 802.11 interface in bridge mode
- B. 4.9-GHz interface in bridge mode, 802.11 interface in access point mode
- C. 4.9-GHz interface in access point mode, 802.11 interface in access point mode
- D. 4.9-GHz interface in access point mode, 802.11 interface in bridge mode

Answer: B

QUESTION 12:

Which three faults are generated by radio management? (Choose three.)

- A. interference detection
- B. AAA server availability
- C. ad-hoc networks
- D. security misconfiguration

- E. friendly access point
- F. rogue access point

Answer: A,C,F

QUESTION 13:

Certkiller .com in the United States requires connectivity between two campus locations that are located 6 miles (9.65 km) apart. The customer also needs a minimum data rate of 54 Mbps in an area that is known to have 2.4-GHz interference. Choose two appropriate devices that will provide a bridge link and avoid the interference. (Choose two.)

- A. Cisco Aironet 1400 Series wireless bridge
- B. Cisco Aironet 1210 Series access point
- C. Cisco Aironet 1100 Series access point
- D. Cisco Aironet 1242AG Access Point
- E. Cisco Aironet 1300 Series outdoor access point/bridge

Answer: A,D

QUESTION 14:

A wireless using core feature set products uses which protocol for radio management?

- A. LWAPP
- B. CCKM
- C. WLCCP
- D. SNMP

Answer: C

QUESTION 15:

Which two statements correctly describe the Cisco Catalyst Wireless Services Module (WiSM)? (Choose two.)

- A. It requires a supervisor 32 or 720.
- B. It has a maximum of 24 modules per mobility group.
- C. It has a maximum of 18 modules per mobility group.
- D. It requires a supervisor 720 only.
- E. It requires a supervisor 32 only.
- F. It has a maximum of 12 modules per mobility group.

Answer: D,F

QUESTION 16:

How is the bridge group name used in a wireless mesh deployment?

- A. It is used to retrieve the secret shared key.
- B. It is used as a password in communication preceding LWAPP.
- C. It is used to join the outdoor mesh network with the controller mobility group.
- D. It logically groups access points to avoid interference from neighboring networks.

Answer: D

QUESTION 17:

Which device, which uses advanced feature set products, encrypts and decrypts client data?

- A. switch
- B. access point
- C. Cisco WCS
- D. controller

Answer: B

QUESTION 18:

The Cisco 2700 Series wireless location appliance can store up to how many days of historical information?

- A. 15
- B. 30
- C. 60
- D. 90

Answer: B

QUESTION 19:

How many WLAN controllers can Cisco WCS, with a base default license, support?

- A. 75
- B. 125
- C. 50
- D. 100

Answer: C

QUESTION 20:

Certkiller .com brings you a previously completed site survey for the initial wireless implementation from 12 months ago. The customer currently has six access points deployed in the warehouse. The survey shows that the installed coverage provides for a 15-percent overlap between cells at 5.5 Mbps, and a 5-percent overlap at 11 Mbps. This solution has proven to provide adequate coverage and roaming capabilities for the data applications. However, the customer has recently moved to a VoIP telephony solution and has attempted to add seven Cisco 7920 wireless IP phones with limited success. Why has the customer only had limited success with the current deployment to meet the data needs?

- A. inadequate throughput
- B. inadequate overlap
- C. inadequate data rate
- D. too many Cisco 7920 wireless IP phones per access point

Answer: B

QUESTION 21:

Which authentication mechanism was introduced in Cisco Compatible Extensions program version 2?

- A. CKIP and CMIC
- B. PEAP-GTC
- C. AES
- D. EAP-Cisco Wireless (LEAP)

Answer: B

QUESTION 22:

How many prior configuration versions can be archived on the WLSE?

- A. four
- B. six
- C. eight
- D. two

Answer: A

QUESTION 23:

Which WEP key protection method was introduced in Cisco Compatible Extensions program version 1?

- A. AES
- B. CKIP and CMIC
- C. radio management
- D. EAP-Cisco Wireless (LEAP)

Answer: B

QUESTION 24:

Which property of the advanced feature set products protects against the loss of network information, such as passwords and IP addressing schemes, in case of access point theft?

- A. The access point and the controller use X.509 certificates to verify identity.
- B. The controller does not retain its configuration when it is removed from the network.
- C. All management traffic is encrypted between the access point and the controller.
- D. The access point does not retain its configuration when it is removed from the network.

Answer: D

QUESTION 25:

Certkiller .com has a small remote site with 10 access points. In which scenario would a WLSE Express be appropriate to implement?

- A. EAP-Cisco Wireless (LEAP) security is required and no external AAA server is available.
- B. EAP-FAST security is required and an AAA server is available.
- C. EAP-Cisco Wireless (LEAP) security is required and an external AAA server is available.
- D. EAP-FAST security is required and no external AAA server is available.

Answer: D

QUESTION 26:

Which three authentication methods are supported by Cisco Secure ACS? (Choose three.)

- A. EAP-SIM
- B. EAP-Cisco Wireless (LEAP)
- C. EAP-FAST
- D. EAP-MD5
- E. EAP-PEAP
- F. EAP-TTLS

Answer: B,C,E

QUESTION 27:

Which proposed IEEE 802.11 standard will increase the data rate beyond 54 Mbps?

- A. 802.11j
- B. 802.11n
- C. 802.11s
- D. 802.11c

Answer: B

QUESTION 28:

When using Cisco advanced feature set products, integrated guest access supports how many users?

- A. 2000
- B. 1500
- C. 2500
- D. 1000

Answer: C

QUESTION 29:

Certkiller .com is initially deploying 37 lightweight access points per site with local WLAN controllers at each site. If the customer plans to expand to a maximum of 45 access points, which WLAN controller is most appropriate?

- A. Cisco 4136 Wireless LAN Controller
- B. Cisco 4402 Wireless LAN Controller
- C. Cisco 2006 Wireless LAN Controller
- D. Cisco 4404 Wireless LAN Controller

Answer: B

QUESTION 30:

In a mesh network, what is the recommended hop count limit of a pole-top access point from its associated roof-top root access point?

- A. 4
- B. 2

- C. 10
- D. 8

Answer: A

QUESTION 31:

What is a component of the Cisco trust and identity management system?

- A. CiscoWorks WLSE
- B. Cisco WLAN controller
- C. Cisco WCS
- D. Cisco Secure ACS

Answer: D

QUESTION 32:

Which two statements correctly describe the Cisco Catalyst Wireless Services Module (WiSM)? (Choose two.)

- A. It has a maximum of five modules per chassis.
- B. It supports up to 100 access points per module.
- C. It has a maximum of four modules per chassis.
- D. It has a maximum of six modules per chassis.
- E. It supports up to 200 access points per module.
- F. It supports up to 300 access points per module.

Answer: A,F

QUESTION 33:

The Worthington, Lane, Andrews and Newton manufacturing company has three facilities that are located in the city of Columbia, South Carolina, with the corporate office located in downtown Columbia. The R&D facility is located on the north side of the city 4 miles (6.4 km) from the corporate office, and is leasing office space in a five-story building. The manufacturing facility is located 6 miles (9.6 km) to the northwest of the corporate office and 2 miles (3.2 km) west of the R&D facility. Users at the manufacturing plant require network connectivity for file sharing and e-mailing, while the users at the R&D facility require high-speed Internet access with the ability to send large CAD drawings to the corporate office and large machine control files to the manufacturing facility. Presently, the manufacturing facility is connected to the corporate office by a 64-Kbps leased-line, and the R&D facility is connected to both the corporate office and the manufacturing facility by a dedicated T1 line. The company plans to add a second line of development at the R&D facility within the next 60 days. However, the current T1 lines are at a constant 70-percent utilization rate. Currently, a T1 line costs

US\$750 per month for each line. The current projected lead time for installation of additional lines is 90 days, if the current cable plant will support it. A wireless bridging solution would provide which three benefits to the customer? (Choose three.)

- A. rapid deployment
- B. increased bandwidth
- C. lower total cost of ownership
- D. immunity to weather
- E. elimination of monthly charges
- F. guaranteed bandwidth

Answer: A,B,C

QUESTION 34:

The Cisco 4404 Wireless LAN Controller will support a maximum of how many REAPs?

- A. 100
- B. 150
- C. 200
- D. 50

Answer: A

QUESTION 35:

In a non-WDS environment, the local authentication services on an autonomous access point can be used to authenticate which three devices? (Choose three.)

- A. root access point
- B. workgroup bridge
- C. clients that are using the native Microsoft wireless supplicant
- D. nonroot bridge
- E. root bridge
- F. repeater access point

Answer: B,D,F

QUESTION 36:

Which advanced feature set device is provided with a Kensington lock slot?

- A. switch
- B. access point
- C. Cisco WCS
- D. controller

Answer: B

QUESTION 37:

Which two threats are detected by the Cisco WCS? (Choose two.)

- A. rogue access points
- B. spam
- C. out-of-date antivirus definitions
- D. denial of service attacks
- E. malware

Answer: A,D

QUESTION 38:

The Cisco 3200 Series mobile access router has integrated wireless support for which two frequency ranges? (Choose two.)

- A. 5.725 to 5.825 GHz
- B. 5.150 to 5.250 GHz
- C. 900 to 928 MHz
- D. 2.400 to 2.4835 GHz
- E. 4.940 to 4.990 GHz

Answer: D,E

QUESTION 39:

How many access points can be placed on a floor map in Cisco WCS?

- A. 200
- B. 50
- C. 150
- D. 100

Answer: D

QUESTION 40:

Which feature was introduced in Cisco Compatible Extensions program version 1?

- A. EAP-FAST
- B. radio management
- C. EAP-Cisco Wireless (LEAP)

D. WMM

Answer: C

QUESTION 41:

When using advanced feature set products and web authentication, integrated guest access allows secure guest authentication via which protocol?

- A. PEAP-GTC
- B. HTTPS
- C. Cisco Wireless
- D. IPSec

Answer: B

QUESTION 42:

Which threat is detected by the WLSE?

- A. rogue access points
- B. malware
- C. phishing attacks
- D. out-of-date antivirus definitions

Answer: A

QUESTION 43:

Centralized authentication with Cisco Secure ACS provides which security benefit to the WLAN?

- A. MD5
- B. PAP
- C. PEAP-GTC
- D. CHAP

Answer: C

QUESTION 44:

Which two threats are detected by means of the Cisco Network Admission Control?
(Choose two.)

- A. spam
- B. malware

- C. denial of service attacks
- D. rogue access points
- E. out-of-date antivirus definitions

Answer: B,E

QUESTION 45:

Typical mesh access-point placements in a suburban environment should be separated by how many feet?

- A. 300 to 350 feet
- B. 800 to 1000 feet
- C. the average reachable distance that a backhaul link is capable of establishing
- D. 100 to 150 feet

Answer: A

QUESTION 46:

Which statement describes how RSSI information is processed in a WLAN with a location manager using advanced feature set products?

- A. Access points aggregate RSSI information.
- B. The location appliance computes the RSSI information.
- C. WLAN controllers compute RSSI information.
- D. The WCS collects the RSSI information from the 802.11 devices.

Answer: B

Explanation:

The answer should be "The location appliance computes the RSSI information."

The APs collect not aggregate - the controllers aggregate. I am using the same link that it stated. Look at the next line:

http://www.cisco.com/en/US/products/ps6386/products_qanda_item09186a008078ece3.shtml#newfaq

A. The Cisco Wireless Location Appliance uses the same Cisco lightweight access points that deliver traffic as location "readers" for 802.11 wireless clients and Wi-Fi tags. These access points collect received-signal-strength-indication (RSSI) information from all Wi-Fi devices, which include Wi-Fi enabled laptops, voice handsets, Wi-Fi tags, rogue (unauthorized) devices, and rogue access points. The collected RSSI information is then sent through the Lightweight Access Point Protocol (LWAPP) to the Cisco wireless LAN controllers or certain wireless integrated switches or routers. The Cisco wireless LAN controllers then aggregate the RSSI information and send it to the Cisco Wireless Location Appliance through Simple Network Management Protocol (SNMP).

The Cisco Wireless Location Appliance performs location computations based on the RSSI information received from the Cisco wireless LAN controllers. The Cisco wireless

LAN controllers that gather the RSSI information must be associated with the Cisco Wireless Location Appliance.

QUESTION 47:

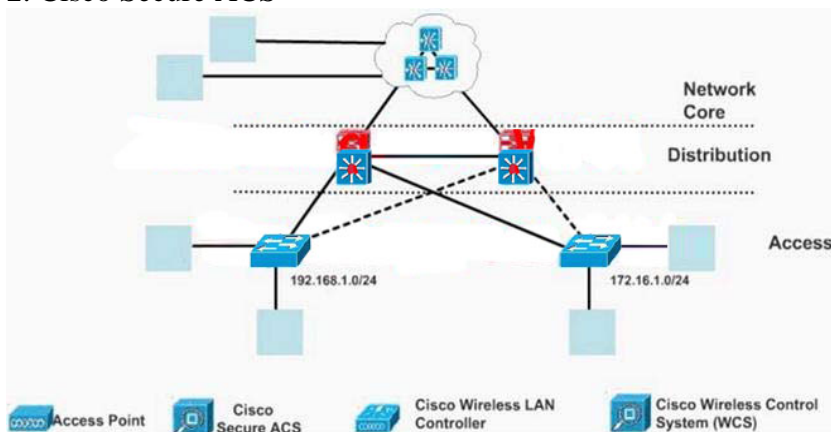
You work as a network technician at Certkiller .com. Your Certkiller trainee asks you to place the advance feature set product icon in the appropriate location on the following diagram for a Layer 2 transport mode.

Each item can be used several times.

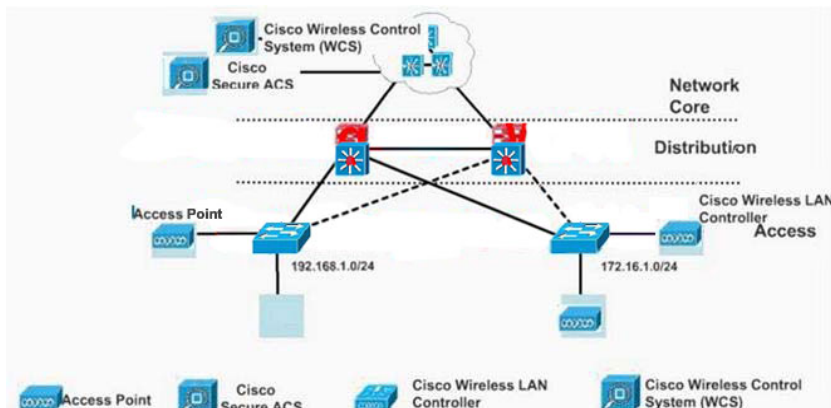
There is one controller and one AP per subnet.

Choices:

1. Access Point (AP)
2. Cisco Secure ACS



Answer:



QUESTION 48:

You work as a network technician at Certkiller .com. Your boss, Mrs. Certkiller, is curious about the wireless core feature set products. You need to select the three correct products. Select three.

Products, select from these	Wireless care feature set products
Cisco Aironet 1000 Series lightweight access point	Place here
Cisco Wireless Control System	Place here
Wireless Domain Services	Place here
CiscoWorks Wireless LAN Solution Engine	
Cisco Aironet 1100 Series access point	

Answer:

Products, select from these	Wireless care feature set products
Cisco Aironet 1000 Series lightweight access point	Wireless Domain Services
Cisco Wireless Control System	CiscoWorks Wireless LAN Solution Engine
	Cisco Aironet 1100 Series access point

QUESTION 49:

A wireless security assessment has been performed for a network that is composed of Windows 2000 and Windows XP wireless clients. The client wishes to use 802.1x authentication using certificate services. Which EAP types are appropriate?

- A. PEAP-GTC and EAP-FAST
- B. EAP-Cisco Wireless (LEAP) and EAP-FAST
- C. EAP-Cisco Wireless (LEAP) and PEAP-GTC
- D. PEAP-MSCHAP and EAP-Cisco Wireless (LEAP)

Answer: B

QUESTION 50:

Which security protocols are supported by a REAP in standalone mode?

- A. WPA-PSK, PEAP MSCHAP, and WEP
- B. TLS, WEP, and WPA CKIP
- C. WEP, WPA-PSK, and WPA2-PSK
- D. WPA AES, WPA-PSK, and WPA2-PSK

Answer: C

QUESTION 51:

Which security feature was introduced in Cisco Compatible Extensions program version 3?

- A. CKIP and CMIC
- B. AES
- C. radio management
- D. EAP-Cisco Wireless (LEAP)

Answer: B

QUESTION 52:

When a wireless controller loses connectivity to a remote Cisco Aironet 1030 Lightweight Access Point, what will be the next step for that remote access point?

- A. continue to provide local connectivity
- B. lose its configuration
- C. support no more than 10 wireless clients
- D. disconnect all associated clients

Answer: A

QUESTION 53:

The local authentication service on an autonomous access point supports which two authentication types? (Choose two.)

- A. EAP-TLS
- B. EAP-FAST
- C. PEAP-MSCHAP
- D. PEAP-GTC
- E. EAP-Cisco Wireless (LEAP)

Answer: B,E

QUESTION 54:

What is used to encrypt data traffic between the access point and the controller?

- A. Data traffic is not encrypted.
- B. Data traffic is encrypted with AES CBMAC.

- C. Data traffic is encrypted with AES CCMP.
- D. Data traffic is encrypted with MD5 hashing.

Answer: A

QUESTION 55:

The WLSE can update firmware on which two devices? (Choose two.)

- A. bridge
- B. access point
- C. switch
- D. router
- E. client

Answer: A,B

QUESTION 56:

Which two key features are unique to the wireless advanced feature set using lightweight access points? (Choose two.)

- A. access point participation in RF management
- B. fast secure roaming
- C. dynamic RF control without advanced management
- D. rogue access point detection
- E. access point registration via digital certificate

Answer: C,E

QUESTION 57:

Which feature was introduced in Cisco Compatible Extensions program version 2?

- A. EAP-FAST
- B. EAP-Cisco Wireless (LEAP)
- C. WMM
- D. radio management

Answer: D

QUESTION 58:

Which property of the advanced feature set products prevents rogue access points from attaching to the network?

- A. The access point does not retain its configuration when it is removed from the network.
- B. All management traffic is encrypted between the access point and the controller.
- C. The access point and the controller use X.509 certificates to verify identity.
- D. The controller does not retain its configuration when it is removed from the network.

Answer: C

QUESTION 59:

When using the Cisco Wireless IP Phone 7920, a separate voice VLAN is recommended. Which two security statements indicate why? (Choose two.)

- A. The Cisco Wireless IP Phone 7920 uses Cisco Wireless (LEAP).
- B. The Cisco Wireless IP Phone 7920 uses 802.11b.
- C. Quality of service can be applied to the voice VLAN.
- D. The voice VLAN can provide Layer 3 fast secure roaming.
- E. Appropriate ACLs can be applied to the voice VLAN.

Answer: A,E

QUESTION 60:

Which two AAA servers are supported by the Cisco wireless LAN controller? (Choose two.)

- A. Meetinghouse
- B. Interlink
- C. Microsoft Internet Authentication Service
- D. Cisco Secure ACS
- E. Aradial Technologies

Answer: C,D

QUESTION 61:

Which three are key components of a site survey? (Choose three.)

- A. documentation
- B. client configuration
- C. pre-survey assessment
- D. coverage verification
- E. facility walkthrough
- F. access point staging

Answer: A,C,E

QUESTION 62:

Which component of the Cisco Integrated Security Solution is responsible for preventing Day Zero security risks, such as Internet worms?

- A. Cisco Security Agent
- B. Cisco Secure ACS
- C. Cisco Catalyst 6500 Series wireless LAN services module
- D. CiscoWorks Wireless LAN Solution Engine

Answer: A

QUESTION 63:

Certkiller .com brings you a previously completed site survey for the initial wireless implementation from 12 months ago. The customer currently has six access points deployed in the facility. The survey shows that installed coverage provides for a 15-percent overlap between cells at a data rate of 5.5 Mbps, and a 5-percent overlap at a data rate of 11 Mbps. In this scenario, the site survey shows that this installation would be adequate to support what?

- A. data collection
- B. 802.11a clients
- C. videoconferencing
- D. wireless VoIP

Answer: A

QUESTION 64:

When designing a wireless VoIP network and using the G.711 codec, what is the maximum number of concurrent calls for a single 802.11b cell?

- A. 9
- B. 7
- C. 5
- D. 11

Answer: B

QUESTION 65:

The WLSE Express local authentication server supports a maximum how many clients?

- A. 2500

- B. 1000
- C. 300
- D. 100

Answer: B

QUESTION 66:

Implementing Wireless Domain Services on an autonomous access point provides which two benefits? (Choose two.)

- A. quality of service
- B. fast secure roaming
- C. local authentication services
- D. radio management
- E. VLAN support

Answer: B,D

QUESTION 67:

Which product manages the Cisco 2700 Series wireless location appliance?

- A. wireless LAN controller
- B. integrated services router
- C. Wireless Control System
- D. CiscoWorks for Mobile Wireless

Answer: C

QUESTION 68:

The WLAN IDS that is provided by Cisco protects the network if a client has not received the proper antivirus updates. Which action is taken by the WLAN IDS until the client has received the updates?

- A. remotely disable the client network card
- B. quarantine the client
- C. issue a remote shutdown command to the client
- D. disassociate the client

Answer: B

QUESTION 69:

When designing a wireless VoIP network, what is the recommended lowest data rate?

- A. 1 Mbp
- B. 11 Mbps
- C. 5.5 Mbps
- D. 2 Mbps

Answer: B

QUESTION 70:

An integrated services router that is configured as a backup RADIUS server for wireless clients can support a maximum of how many user accounts?

- A. 400 to 500
- B. 900 to 1000
- C. 1 to 50
- D. none

Answer: B